

## **WILDFIRE RESPONSE PLAN: SPRING GREEN PRESERVE**

**Location:**     **East Tract:** T8-9N – R.4E sections 5,6 7& 32 Spring Green Township 422 acres  
                  **West Tract:** T.9N – R.3E. sections 35 & 36; Spring Green Township 428 acres

**Directions:**   **East Tract:** North on SHW 23 from Spring Green, left onto Jones Rd for 3/4 mile (Fire no. E5196A). Access bluff at east tract from neighbor's entry off STH 23.  
                  **West Tract:** Access at end of Pearl Rd to reach old fields and base of the bluff. To access bluff tops and wooded ridges use entry at E4449 Horseshoe Road.

Neighbor has strands of electric wire across the access lane off of Horseshoe Road. Pull strands down to cross.

**Site Description:** The Preserve is comprised of the East and West Tracts. The property features varied topography with steep bluffs. The flat areas and south facing slopes are primarily dry prairie, and grassy fields, while the north facing slopes are woodlands. Maps are attached that show the location of the preserve and nearby structures and roads.

**Management history:** Spring Green east has a long history of fire management since the early 1980's. Most of the southern and western portions of the property are burned every three or four years. Less than 40 acres have been burned at the West Tract over the past two years.

**Fire Sensitive Areas:** Structures on and near our property are marked on the map.

**Fire Control Efforts:** Entryways to the preserve are marked on the maps. The bluffs are steep and non-navigable with vehicles, disturbance would cause erosion and undesirable disturbance. Efforts should be made to use existing roads and trails and control lines. Backing fires could be lit from trails and access lanes to create a larger burned out area that will minimize the chances of a head fire reaching paved roads and neighboring homes.

**Emergency Contacts:** In the event of a wildfire the contacts are:

**Spring Green Fire Department:** 911 or (608) 588-2030 Fire Chief: Lin Gunderson

**Sauk County Sheriff Department:** 911 or (608) 356-4895

**Wisconsin DNR fire control:** DNR Ranger Steve Williamson (608) 588-2591 x201

**The Nature Conservancy of Wisconsin** (608) 251-8140 (Madison) Mon –Friday 8:30-4:30

Hannah Spaul, Director of Land Management:

Madison Office: (608) 251-8140 x122 Cell: (608) 225-8605

Eric Mark: Land Steward

Madison Office: (608) 251-8140 x126 Cell: (715) 307-1695

Steve Richter, Director of Conservation - SW Wisconsin:

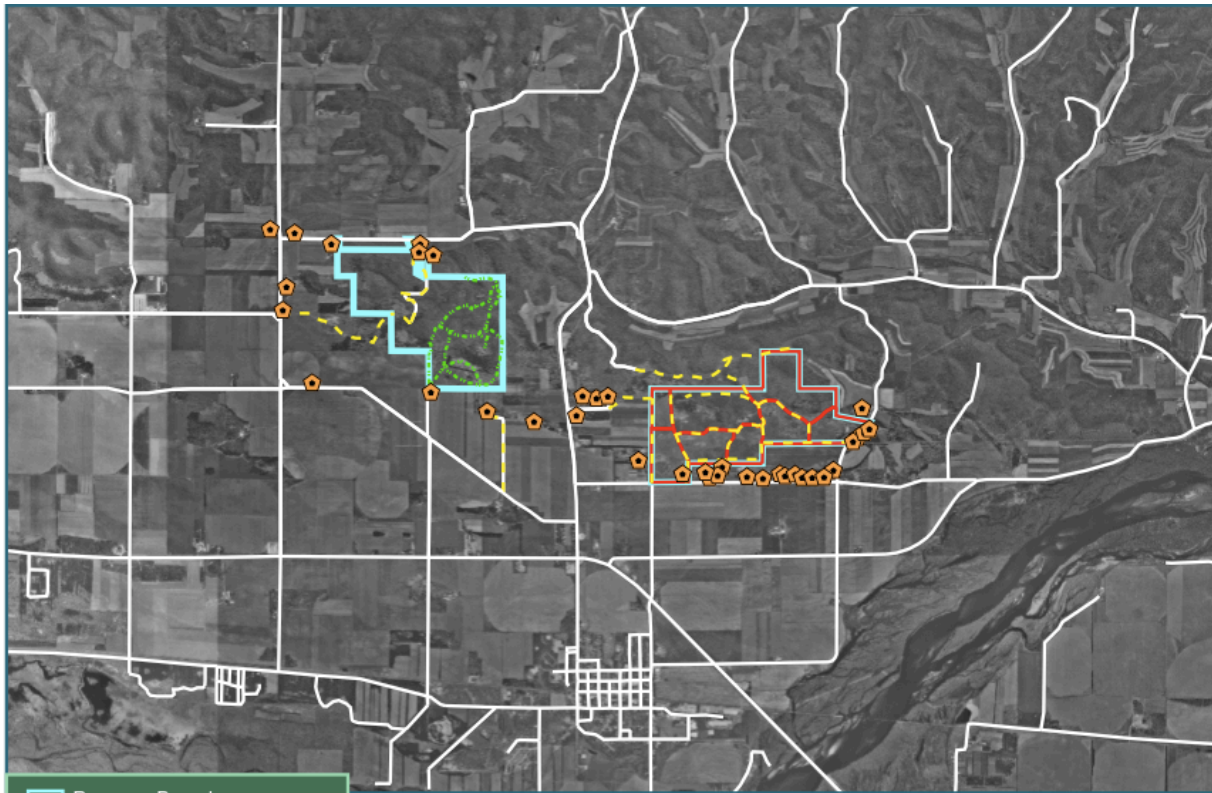
Baraboo Office: (608) 356-5300 Home: (608) 767-1263; Cell (608) 577 -7076

Tom Wise, Fire Leader:

Home: (608) 845-7571 Work: (608) 262- 3091

**The Nature Conservancy's Radio Channel Frequency:** 157.5700

**TNC resources available at one of their controlled burns:** Type 7 engine, ATV, hand tools, staff and volunteers with firefighter training.



- Preserve Boundary
- Burn Units
- Building
- Roads
- Unimproved Roads - Driveable
- Control Lines - ATV only



**Spring Green Wildfire  
Response Map**



Sauk County  
Spring Green Township  
T. 8-9 N. - R. 3-4 E.